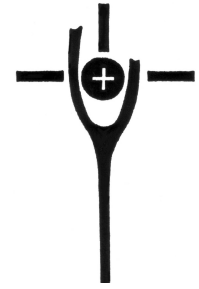


BETHEL LUTHERAN CHURCH



BETHEL BANNER

"... making disciples for Jesus Christ in our church, neighborhood and world..."

DECEMBER 2010

DECEMBER WORSHIP SERVICES



Advent

*Midweek Advent Services and a meal
"The Time Between the Testaments"*

Wednesday, December 1, 8 & 15

11 am worship with a noon lunch

6 pm supper and 7 pm worship

**Friday
Christmas Eve
December 24th
7 pm Worship**



Christmas Eve
CANDLELIGHT
SERVICE



**Saturday
Christmas Day
December 25th
10 am Worship
11 am Caroling**

INSIDE THIS ISSUE:

FROM PASTOR	2
FROM THE OFFICE	3
STEWARDSHIP	4
GODSPEAK INFO	6
SPECIAL EVENTS	5-8
MINISTRY LEADERS MTG	9
SERVING GROUPS	10
BIRTHDAYS & ANNIVERSARIES	11

SET THE STAGE

FROM PASTOR SEABAUGH

Surprise! It's Christmas!

Maybe this happens to you too. You're going merrily along your way, enjoying the autumn leaves and the cooler weather and WHAM! It's Christmas time! Christmas decorations on the streets, Christmas music in the stores (secular, of course), Christmas obligations fill our calendars, Christmas gifts to buy for everyone, and enough Christmas busyness to send us directly into hibernation for the whole month of January! Surprise! It's Christmas! Life just seems to come at us this way, always rushing from this to that, never really prepared to take in the true meaning of what's going on around us. This year, let's take the surprise out of Christmas and set the stage.

Setting the Stage for Jesus

We'll start by taking the surprise out of Jesus. What do I mean by that? Well, as we continue reading the Bible together, we will reach the New Testament on February 14th. Between Malachi and Matthew is roughly 400 years. A lot can happen in 400 years! A lot DOES happen in 400 years! The world is a very different place when Jesus comes. Well, we could let it come like Christmas does so often and be a surprise, or we can set the stage for Jesus to come. That's why we're focusing on "The Time between the Testaments" for our Advent Midweek Worship series. On December 1, 8 & 15 at 11am and 7pm we'll worship God and take a look at how God set the stage for Jesus. Watch the New Testament come alive as you see how all the pieces come together for the Son of God to come and save the world.

Advent Rediscovered

Taking the surprise out of Jesus' arrival is a great first step in setting the stage for Christmas. Let's take it even further. Let's rediscover Advent... not in the church building, but in your home. I know it's crazy at home during Advent, but find a time to devote to preparing you and your family for the celebration of Jesus' birth. Say a special prayer at mealtimes that focuses on the coming of Jesus. Lighting the Advent candles each night is great way to look forward to Christmas. Pick an Advent or a Christmas song to sing together with the family. Or start a new tradition that focuses us on what Christmas is all about so that when it comes, we're ready to really celebrate Christmas.

When the Stage is Set

I will admit to you, I struggle with Christmas now. All the busyness surrounding Christmas in our culture is just so empty. It gives me a profound sadness that the majority of people fill their lives with so much only to have it mean so little. We in the church can't help but to be influenced by it too. Jesus calls us to be in the world, yet not of the world. This challenge is ours every December to set the stage and let the main character take His place: Jesus. When the stage is set in our lives, we fill the emptiness with overwhelming meaning. When the stage is set, our joy has eternal significance, both for us and for those around us. When the stage is set, the surprise of Christmas becomes an anticipation that builds into a rich, heartfelt celebration that Jesus did come to save us.

Merry Christmas!

Pastor Seabaugh

FROM THE OFFICE—LYNNE

Office hours Monday through Friday
from 9 am to 3 pm



Bethel's Picture Directory is in process — Jim Nash has been taking family pictures each Sunday this fall. Want your picture in the directory and have missed Jim? Call 651-488-6681

Bulletin items to the office by Wednesday mornings
Banner information to the office by the 15th of the month

Baptisms

Alessandra Bartelme
Tyler & Kayli Schneider
September 19, 2010

Kolu Jones
November 7, 2010

Amelia Meier
November 14, 2010

Death

Marian Sherbert
October 23, 2010



Thank you! Thank you! To all who helped make our Financial Foundations for Life Workshop this fall a success. Thanks to those who provided food, served and cleaned up, did child care, and taught the class — you are much appreciated!!!

STEWARDSHIP FOR OCTOBER 2010

October Budget Receipts	\$ 24,025.25
October Budget Requirements	\$ 26,605.00
Budget Receipts Year to Date	\$ 81,899.72
Budget Requirements Year to Date	\$ 95,778.00

*Includes:

Improvement Fund	\$ 901.00
Missions	\$ 700.00
African Worship	\$ 338.00
Education (includes Thrivent supplement)	\$ 1,371.00

Other Receipts (not in Budget Receipts):

Dorothy Day	\$ 41.50
Benevolence Fund (Needy Fund)	\$ 595.37
Keystone Food Shelf (Green tape)	\$ 60.00
Fellowship Supplies	\$ 36.00
Sunday School	\$ 68.10
Memorial — Myrtle Bayer	\$ 400.00
Memorial — Ernie Gall (AC Fund)	\$ 3,954.00
Air Conditioning Fund	\$ 5.00
MN LCMS Grant (Fofana)	\$ 1,666.00
Advertising	\$ 250.00
Brianna Engen Benefit	\$ 310.00

Worship Attendance

October Average 2010	178
October Average 2009	119

Sunday School Attendance

October 2010	33
October 2009	29



STEWARDSHIP

A STEWARDSHIP MOMENT



December is a month of giving and receiving. It all started with God's greatest gift of sending us His only-begotten Son on that first Christmas to be our Savior and Lord. John 3:16 (NIV) says it so clearly: "For God so loved the world that He gave His one and only Son, that whoever believes in Him will not perish but have eternal life." The Apostle John states in his first letter: "How great is the love the Father has lavished on us, that we should be called children of God! And that is what we are!" (1 John 3:1 NIV)

As the Holy Spirit helps us to grow each day as the children of God, we also grow in our loving and giving, because loving and giving are two important characteristics of our God. Just like children imitate their parents, so we also are to imitate God. God delights in loving and giving. The Scriptures of the Old and New Testaments give overwhelming evidence of this truth. Jesus taught that "it is more blessed to give than to receive." (Acts 20:35 NIV)

Where do you find yourself this December as it relates to loving and giving? Many Christians experience how true these words of Jesus really are. In this season of giving and receiving where do you find your greater joy? Is it in giving or in receiving? Are you among those people who get more joy and excitement from searching for and finding the right gifts for the special people in their lives? Many Christians really do enjoy giving more than receiving.

During this season of giving and receiving take some time to reflect on the words of Jesus that "it is more blessed to give than to receive" and pray for the Holy Spirit's power to grow in the grace of giving. And may that giving be more than just selecting gifts for those you love. May that giving extend to supporting the work of the Lord through Bethel Lutheran Church and other charitable organizations as you give generously of your time, abilities and financial resources to bring the love of Jesus into the lives of others.

Merry Christmas and may this Christmas be a time of joy as you reflect on the greatest gift of all—God's only begotten Son to be your Savior. In appreciation of and response to that best gift of all, may you also experience the truth that it is really more blessed to give than to receive.

In the service of our Lord,

Financial Stewardship Team

Ladies Advent Tea

At the Parsonage

An event for the women of Bethel. Bring a special young lady to enjoy this event. (Age 5+)

Saturday, December 11, 2010

2:00 pm — 4:00 pm

1301 Magwood Street

Hosted by Ruth Seabaugh



Please bring a dessert or hors d'oeuvre to share.

BETHEL LUTHERAN CHURCH NEW MEMBERS — NOVEMBER 14, 2010

**Paul & Lisa Atchison
Harper & Autumn**

1079 Stinson St
Saint Paul MN 55103
Home Phone 651-488-0453

Josiah Bode
1207 Danforth St # 9
Saint Paul MN 55117

Jesse Holmgren
Minneapolis MN 55403
Cell Phone 320-431-9010

Kent Kaiser
1409 Marion St
Saint Paul MN 55117
Home Phone 651-338-1777

Nathan LeGreco
860 123rd Lane NW
Coon Rapids MN 55448
Home Phone 602-697-1251

Tena Patterson
877 23rd Ave SE
Minneapolis MN 55414
Home Phone 701-739-7724

**Paul & Cara Wilson
Quenby, Coda & Anneli**
1319 Blair Ave
Saint Paul MN 55104
Home Phone 651-645-0332



ADDRESS CHANGES

Mandy Ager
608 Shardlow Ln NE
Byron MN 55920-1547

Alexandria Beckman
2005 Ide St #5
Maplewood MN 55109-3529

Tamara Enright
1225 Danforth St
Saint Paul MN 55117-4201

Doug Pinotti
1815 Ross Ave E
Saint Paul MN 55119-3431

Janet Sonie
1480 Klainert St #A
Saint Paul MN 55117-5951

DECEMBER GODSPEAK READINGS

MIDWEEK GODSPEAK
GROUPS

Week 65—Dec 6-11

Monday	Ezekiel 35-36
Tuesday	Ezekiel 37-39
Wednesday	Ezekiel 40-42
Thursday	Ezekiel 43
Friday	Ezekiel 44
Saturday	Ezekiel 45-46

Week 66—Dec 13-18

Monday	Ezekiel 47-48
Tuesday	Daniel 1
Wednesday	Daniel 2
Thursday	Daniel 3-4
Friday	Daniel 5
Saturday	Daniel 6

Week 67—Dec 20-25

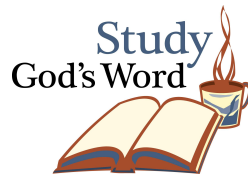
Monday	Daniel 7-8
Tuesday	Daniel 9
Wednesday	Daniel 10-12
Thursday	Hosea 1-2
Friday	Hosea 3-4
Saturday	Hosea 5-6

Week 68—Dec 27-Jan 1

Monday	Hosea 7-8
Tuesday	Hosea 9-10
Wednesday	Hosea 11-12
Thursday	Hosea 13
Friday	Hosea 14
Saturday	Joel 1

GodSpeak Groups Fall Schedule 2010**September 12– November 20 (10 weeks)**

Pick a group to join — all are open to welcome new members!!!
It is never too late to join or start reading God's Word!

**Monday Evening 6:30 pm**

at Bethel in the Youth Room (comfy chairs!)

Leaders: Tim Schmalz (651-489-5113)
& Steve Moeller (651-487-0316)

Tuesday Morning 10 am

at Bethel in the Fellowship Hall

Leader: Pastor David Seabaugh (651-488-6681)

Tuesday Evening 7 pm

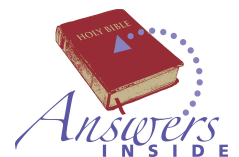
at ?? (rotates homes each week)

Leaders: Matt/Lisa Stefan (651-675-9742)
& Alan/Kassy Bartelme (651-894-2223 or 651-894-2224)

Wednesday Evening 8 pm

at Caribou (Lexington & Larpenteur)

Leader: Karrie Thies (651-488-8407)

**Thursday Evening (African) 7 pm**

at Bethel

Leader: Lusienie Fofana (651-216-9242)

Saturday Morning 9 am

at Bethel in the Youth Room (comfy chairs!)

Leaders: Bryan Marshall (612-845-9672)
& Dave Rustad (651-489-6834)

"For I will take you out of the nations; I will gather you from all the countries and bring you back into your own land. I will sprinkle clean water on you, and you will be clean; I will cleanse you from all your impurities and from all your idols. I will give you a new heart and put a new spirit in you; I will remove from you your heart of stone and give you a heart of flesh. And I will put my Spirit in you and move you to follow my decrees and be careful to keep my laws. Then you will live in the land I gave your ancestors; you will be my people, and I will be your God." Ezekiel 36:24-28

BETHEL'S COMMITMENT TO EDUCATION!

Dear Bethel congregation: Thank you so much for the support that you give me to be able to go to Central Lutheran!

Name: Dominika Walsh

What's great about being in 8th grade? I love my class & the field trips!

Who is your teacher? Mr. Heuton

What do you like most about your teacher? He's really funny.

What is your favorite subject? Music, because I love to sing and art because it's really fun.

What is your favorite Bible verse? John 3:16 — For God so loved the world that he gave his one and only son that whosoever believes in Him shall not perish but have eternal life; and Proverbs 22:6 — Train up a child in the way he should go, and when he is old he will not turn from it.

What is your favorite thing about attending Bethel Lutheran Church? It's small and everyone is nice.

From the parents: It is important for our children to receive a Christian education because it reinforces what we teach them at home and what they learn at church. Thank you for your support.



1ST QUARTER HONOR ROLL

A Honor Roll

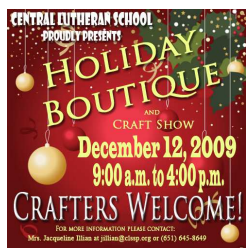
Harper Atchison
Anna Lange
Roxanne Thies

B Honor Roll

Jake Bluhm
Grace Matthes
Dominika Walsh



CLS 2ND ANNUAL HOLIDAY BOUTIQUE AT CLS—DEC 11TH



Central Lutheran School (775 Lexington Parkway N, St. Paul) is hosting their 2nd Holiday Boutique on December 11, 2010 from 9:00 am to 4:00 pm. Come shop for those last minute holiday items! Vendor space is still available to anyone who would like to show their products, services, or specialty items for \$35 per 8 ft table (electricity extra). Call the school for details 651-645-8649. This is also be a great time for your group to get their message out to the community. If you would like to participate in this boutique, contact the school at (651) 645-9649.

“55” CLUB—THURSDAY, DECEMBER 9—12:00 PM



Bethel “55” Club’s Annual Christmas Party will be on Thursday, December 9th beginning with a social hour at 11:30 am. A festive BBQ Rib Dinner will be catered by Magnolia Restaurant — cookies are welcome and desired! Cost is \$8 a person payable to Betty Paulus Sign up on the lounge bulletin board and come to enjoy Karita Wienke on the keyboards!!

EPIC—THE FUTURE CHURCH NOW!



EPIC- The Future Church Now! Bethel’s Youth group (9th - 12th grade) meets on Wednesday evenings from 6:30-9:00 pm at Bethel with confirmation class (7th-8th grade) joining them at 8 pm after confirmation. In December EPIC will gather at Bethel’s Advent services, and in January regular Wednesday evenings will resume as Bethel’s Christian youth grow in faith together!

BETHEL’S LIBRARY NEEDS YOUR HELP!



Jean Beckman would love some help in the library — choosing books to purchase, cataloging new books and taking care of the books that are in the library. Love to read — love books— contact Jean at 651-739-0707 to volunteer!

YOUTH BIBLE BOWL 2011

A team competition bible quiz game for 7th – 12th grade youth on Saturday, April 9, 2011 at Concordia University St Paul MN. **The Topic is Hebrews and 1 & 2 Peter (NIV Translation).** This is a great way for you to study the Word of God on your own and in a group. You are expected to read the scripture on your own and attend weekly practices beginning Sunday, January 16, 2010. Interest- ed??? Contact the church office at 651-488-6681



BETHEL PROPERTY PROJECTS

CONCRETE WORK \$ 5,000
(NW CORNER OF CHURCH BUILDING AND SIDEWALK)

\$ 4,970 to raise!

AIR CONDITIONER \$12,300
(FELLOWSHIP HALL) FULLY FUNDED!!!!!!!

\$ 0.00 to raise!



The parsonage windows were purchased, paid for and installed! The Fellowship Hall Air Conditioner has received full funding and is in process of getting bids! Look for future projects at Bethel to update and take care of our property. Bethel will continue to fully fund each project before work begins!

MINISTRY LEADERS MEETING — OCTOBER 28, 2010

Present: Lynn Schibonski; Dave Rustad; Tricia Bluhm; Jeff Bartels; Pastor Seabaugh

Overview:

Ministry Leaders met to discuss goals for 2010-2011. Those present reviewed minutes of the August 19 Ministry Leaders Meeting which reviewed the congregation's strengths, weaknesses, opportunities, threats. From these, we outlined seven goals we hope to accomplish by the end of June 2011.

GOAL: Multiply and Grow the Church

We plan to slightly shift Bethel's focus from being a church-planting congregation to being a multiplying-and-growing congregation church. This aligns with LINC's new emphasis, which is becoming a network of like-minded congregations that

- (a) multiplies the church and
- (b) loves the community.

Examples could include:

Having band perform at venues outside Bethel.

Holding Financial Foundations for Life classes outside Bethel.

Bringing together volunteers to create neighborhood newsletter/flyer.

Action

The Outreach Ministry Leader will form a group/subcommittee to identify opportunities for outreach and the resources needed to accomplish them. The group may also be a LINC liaison.

GOAL: Produce a Welcoming Video (CD) for the Congregation

We would like a short (3-minute) video/DVD/CD created that helps introduce Bethel to visitors. The video could be a standalone DVD/CD that is given visitors with their "mug" AND it could be part of Bethel's website. This resource could be a combination of photos with camera movement and music and/or video clips of Bethel

events and interviews. If possible, we would like the video to encompass the ministries of Bethel year-round.

Action

The Outreach Ministry Leader and Worship Ministry Leader will identify possible volunteers to work on this project.

GOAL: Better Involve Youth in Congregation's Ministries

We want to do everything possible to involve post-confirmation youth in the life of the congregation. Initially, this will evidence itself by being more intentional by inviting youth to participate on congregational worship teams. We also want youth to have a "stake" in the congregation and a voice in decisions that affect them and others. This will include representation on the Leadership Team and voting in congregational meetings.

Action

The Leadership Team will discuss steps to include a youth representative on the Leadership Team as an ex-officio (non-voting) member. The President will appoint a task force to recommend revisions to the congregation's constitution and bylaws to enable confirmed members' have a vote on the Leadership Team.

GOAL: Resolve Projection Needs for Sanctuary.

Bethel is challenged in its ability to project images in the sanctuary given the congregation's physical design. Purchasing multiple TVs that could be installed in the front of the sanctuary as well as the sanctuary's midpoint could possibly resolve this challenge.

Action

The President will assign a task force to further research technical requirements, costs and funding options and make recommendations.

GOAL: Prepare for Next Phase of GodSpeak.

GodSpeak has been a blessing to members of Bethel as they gather to hear God speak to them and through them. After completing reading through the Bible late next summer, the next phase will look at specific books of the Bible at a slower, more in-depth pace.

Action

Pastor and our elders will seek ideas from congregation members about which books of the Bible and studies might be appropriate for GodSpeak II.

GOAL: Continue Strong Youth Ministries.

Bethel is blessed to have a strong and growing youth ministry. EPIC is strongly attended. Jordan Ray is doing a fabulous job. Bethel's confirmation program is valued by students AND parents. Last year's multi-church VBS program was a hit .

Action

The Education Ministry Leader will work with Bethel members & Pastor to continue delivering effective youth ministries and opportunities.

GOAL: Strengthen support for Christian education for all Bethel families.

Recent challenges facing Central Lutheran School have brought the needs of that school to the forefront of Bethel's attention and energy. Member, Leadership Team and pastoral attention to these needs have drawn a great deal of time and concern. These needs must be balanced against the goal of making, maturing & mentoring Christ followers within all Bethel families, especially how we might support parents in their efforts to raise children who love Jesus.

Action

The Leadership Team will address the "big picture" of our education ministry in relation to CLS & our other goals in coming meetings.

SERVING AT BETHEL IN DECEMBER

Coffee Hour Servers

December 5
 Vicki Krivanek
 Karrie Thies

December 12
 Lisa Stefan
 Traci Matthes

December 19
 Connie Halverson
 Deb Clasen

December 26
 Betty Paulus
 Karita Wienke

Pew Servicing

Betty Paulus

Drivers

December 5—Harold Stener
 December 12—Tim Schmalz
 December 19— Bruce Bairaktaris
 December 26—Ray Bade

Banner Assembling

December 22

Bernice Ellmann
 Mavis Henke
 Dorothy Jorgensen
 Lynette Knippenberg
 Driver: Tim Schmalz



Meals on Wheels

December 6
 Ray and Karen Bade
 December 13
 Tim Schmalz and Dave Stueber
 December 20
 Betty Paulus and Karita Wienke
 December 27
 Sue Norris and Karen Bade

Worship Teams

December 5—ITimothy
 December 12—Search 'n Rescue
 December 19—Share the Joy
 December 26—Praise Him/Proclaim Him

Dorothy Day – December 26— Group II

Sean Boll	Sue Norris
Goodrich Family	Traci Matthes
Gary & Terri Glaeser	Holly Fohrenkamm

Money Counting Team # 4

Glen & Bernice Ellmann
 Grenneth Nienhaus
 Tim Schmalz

OPERATION CHRISTMAS CHILD

Thank you Bethel members for your generosity — **37 Operation Christmas Child boxes** will go young children with God’s truth. Pray for the safety of those traveling to deliver the boxes, pray for the children who receive the boxes and pray for their families as they struggle to provide for their children. Most importantly, pray that each child and all their family members know Jesus as their LORD and Savior!



The staff at Bethel Lutheran Church thanks the congregation for the appreciation gifts given to them at worship on October 31st. It is a pleasure to work with a congregation that is focused on serving our Lord throughout its many Bible-based ministries.

DECEMBER BIRTHDAYS



Dennis Handt Jr	12/01		
Carolyn Weber	12/02	Marc Johnson	12/13
Harold Stener	12/04	Nicollette Hoveland	12/15
Gregory Flynn	12/05	Anthony Lopez	12/17
Roy Oberhamer	12/05	Dorothy Whalen	12/17
Traci Matthes	12/06	Sandra Bairaktaris	12/18
Gary Glaeser	12/07	Richard Tehle	12/19
Geraldine Klemz	12/07	David Gardner	12/20
Brenda Walsh	12/07	Bonnie Witt	12/21
Tatianna Moldrem	12/08	Lisa Kubiszewski	12/23
Nicholas Rozikes	12/08	Nancy Plumbo	12/23
Jacqueline Faser	12/09	Keya Lopez	12/25
Dale Pohl	12/09	Aubrie Lopez	12/28
Derek Murray	12/10	Joe Kujawa	12/30
Regine Marshall	12/12	Kayli Schneider	12/31
Winnie Bentz	12/13	Krystal Woto	12/31

DECEMBER BAPTISM BIRTHDAYS



Emma Hayhurst	12/01
Sandra Atchison	12/03
James A Faser	12/08
Joshua Vandercar	12/11
Christopher Bartels	12/13
Sean Boll	12/13
Susan Boll	12/14
Jon Oberhamer	12/14
Melissa Johnson	12/15
Mary Martens	12/16
Geraldine Klemz	12/17
Carolyn Weber	12/17
Lucille Dahl	12/19
Cathryn Johnston	12/19
Patrick Walsh	12/19
David Weldon	12/21
Paul Fohrenkamm	12/22
Alexander Bairaktaris	12/23
Evelyn Stener	12/25
Tatianna Moldrem	12/27
Karita Wienke	12/28
Philip Zeon	12/31

A		
N		
N		
I		
V		
E		
R		
S		
A		
R		
Y		
	Dave & Karin Hagen	13 years on 12/07
	Jeffrey & Nantana Vilmo	34 years on 12/10
	Irvin & Lois Hansen	65 years on 12/15
	Sean & Susan Boll	15 years on 12/16
	Scott & Chelsie Anderson	6 years on 12/17
	Douglas & Theresa Pinotti	13 years on 12/26
	Bill & Sharon Newpower	47 years on 12/28
	Steve & Barbara Moeller	37 years on 12/29
	Benjamin & Hawa Woto	10 years on 12/31

I will put my Spirit in you and you will live, and I will settle you in your own land. Then you will know that I the LORD have spoken, and I have done it, declares the LORD. Ezekiel 37 :14

Bethel

Lutheran Church LCMS



670 W Wheelock Parkway
Saint Paul MN 55117

NON PROFIT ORG
US POSTAGE PAID
SAINT PAUL MN
PERMIT NO 792

ADDRESS SERVICE
REQUESTED

DATED MATERIAL

THIS ISSUE WAS MAILED
NOVEMBER 23, 2010

BETHEL LUTHERAN CHURCH LCMS

670 W Wheelock Parkway

Saint Paul MN 55117

Phone: 651-488-6681

Fax: 651-488-3800

E-mail: blc@bethelstpaul.com

www.bethelstpaul.com



Sunday Morning Worship 9:30 am

Sunday Morning Sunday School & Bible Class 10:45 am

Sunday Morning African Worship 11:30 am

GodSpeak Midweek Bible Groups (See page 6)

Tuesday Morning Prayer 9:30 am